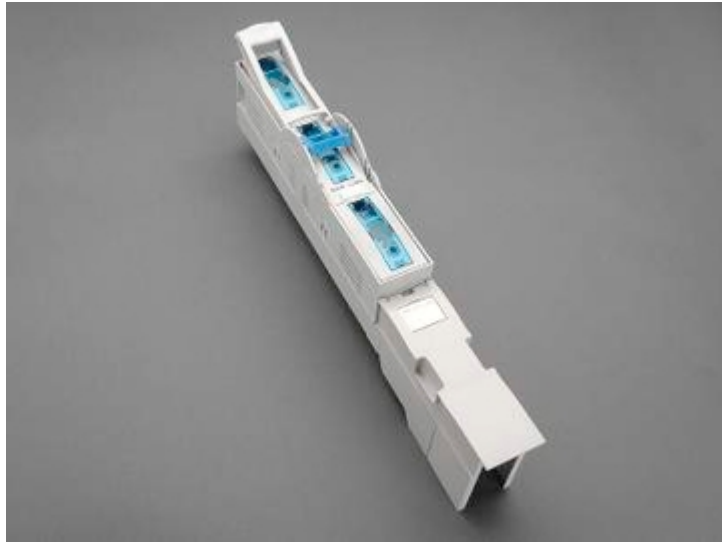


## in-line fuse switch-disconnector 160 A (33 235)



### Description

#### Article

Part No.: 33 235

SECUR<sup>®</sup> LeanStreamer

in-line fuse switch-disconnector 160 A

screw M8 / clamp 70mm<sup>2</sup>

size 00

for busbars 30, 40, 50, 60 x 10

#### System

100Energy

185mm-System

**Product group** 12

**Subgroup** 51

**pack size** 1

**EAN** 4021267332358

#### Advantages of the product

Self-closing inspection holes are available in the cover.

Catalog page 2015 : 3/2

eCl@ss 6.1 27142108

eCl@ss 7.1 27142108

ETIM 4.0 EC001046

ETIM 5.0 EC001046

## Approvals

### Standards

IEC 60947-1:2007 + A1:2010 + A2:2014

IEC 60947-3:2008 + A1:2012

### Approvals

IEC (CB), CCC



Type number: SLS-00

CCC certificate: 2004010302117261

## Product data

### Electrical data

Rated current (IEC): 160 A

Rated voltage (IEC) AC: 690 V

Utilisation category AC (IEC 60947-3): AC-22B (690V)

AC-23B (400V)

AC-23B (500V/125A)

Utilisation category DC (IEC 60947-3): DC-Angaben: 2 Strombahnen (L1,L3) in Reihe

DC-20B (440V)

Power dissipation:

The power dissipation at a typical load of 80% of the rated current results to 12.8 W.

(The power dissipation for operation with rated current would be 20 W.)

Rated surge voltage  $U_{imp}$  : 8 kV  
max. permitted voltage (IEC) AC: 800  
V  
max. permitted voltage (IEC) DC: 800  
V

cond. rated short-circuit current with fuses: 50 kA / 690  
V  
approved with fuse links of characteristics: gG

for fuse links IEC 60269-2-1 (I) / DIN VDE 0636-201 size 00 up to 12W power dissipation

Special operating conditions corresponding to IEC / EN 61439-1 may yield to faulty activations of pilot switches and fuse monitors. The operating conditions have to be considered for the analysis of status signals.

Degree of protection IP30 at front, degree of protection near terminal depends on installation

#### **Mechanical data**

W x H x D: 50 x 455 x 120  
Weight: 137 kg/100  
for busbars: 30, 40, 50, 60 x 10

Type of fastening: can be screwed onto drilled busbar,  
M8, 12 - 14Nm torque,  
or using terminal clamp,  
adapter for 185-mm-System,  
connection 70mm<sup>2</sup>, screw M8, 12 - 14Nm torque,  
connection clamp 1.5-70mm<sup>2</sup>, 3Nm torque  
wedge clamp terminal 16-70mm<sup>2</sup>, 3Nm torque

#### **Terminal points**

screw M8 :  
Md 12 - 14 Nm

## Material properties

Main body:	temperature stability 125°C, self-extinguishing in acc. to UL 94, creepage resistance CTI 200
Contacts:	spring-loaded copper contacts, silver plated
Shock protection cover:	temperature stability 125°C, self-extinguishing in acc. to UL 94, creepage resistance CTI 600, halogen-free
Handle:	temperature stability 125°C, self-extinguishing in acc. to UL 94, creepage resistance CTI 600, halogen-free

## Reference

with adapter (accessory) for the 185mm-System power

## Accessories



**03 727**  
Clamp connector  
1,5 - 70 mm<sup>2</sup>  
size 00



**30 894**  
M8 screw connector  
with spring washer  
size 00



**33 113**  
lateral cover support  
for front covers  
size 00 - 3



**33 126**  
current transformer 150 A / 5 A  
3 VA / class 1  
size 1 - 3



**33 127**  
current transformer 200 A / 5 A  
3 VA / class 1  
size 1 - 3  
**stock sale**

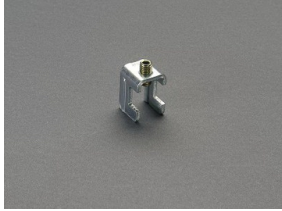


**33 156**  
pilot switch  
changeover 250 V AC / 5 A; 30 V DC / 4 A



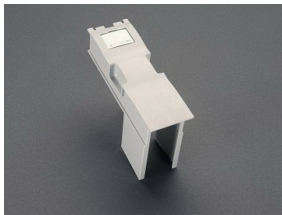
**33 224**

prism terminal, single, for Cu and Al cables  
16 - 70 mm<sup>2</sup>  
NH 00



**33 238**

terminal clamp  
for 33 235  
size 00



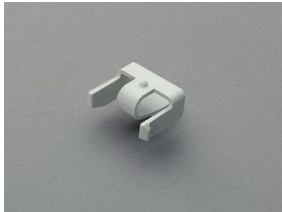
**33 280**

connection cover for adaption to LTL 1-3  
for 33 235  
size 00



**33 282**

single adapter with terminal clamp, without drilling  
185mm; for 33 235, 33 283  
size 00  
**stock sale**



**33 300**

mounting clip for current transformer  
for adapter SECUR®LeanStreamer  
size 00